

Hudson.

Two Units Remaining
Building Now Complete

For Lease

3304 Kingsway, Vancouver, B.C.

**High-profile retail opportunities in
Vancouver's Joyce-Collingwood
neighbourhood**

Marcus & Millichap

Jack Allpress
Personal Real Estate Corporation
JAllpress@MarcusMillichap.com

Trevor Shumka
TShumka@MarcusMillichap.com



OPPORTUNITY

Introducing 3304 Kingsway, a 6-storey mixed-use development by Hudson Projects, will feature 6,248 sf of ground-floor commercial space and 80 secured market rental units across six stories. Situated at the high-traffic intersection of Kingsway and Joyce Street in East Vancouver, the site enjoys excellent visibility and close proximity to the Joyce-Collingwood SkyTrain Station. With 81,000 vehicles passing on Kingsway and 52,000 on Joyce daily, this location offers prime exposure.



96 Walk Score — Walker's Paradise



Excellent exposure to 52,571 VPD off of Joyce Street, and 81,087 VPD off of Kingsway



An expected population growth of 7.2% before 2027 within a 1km radius



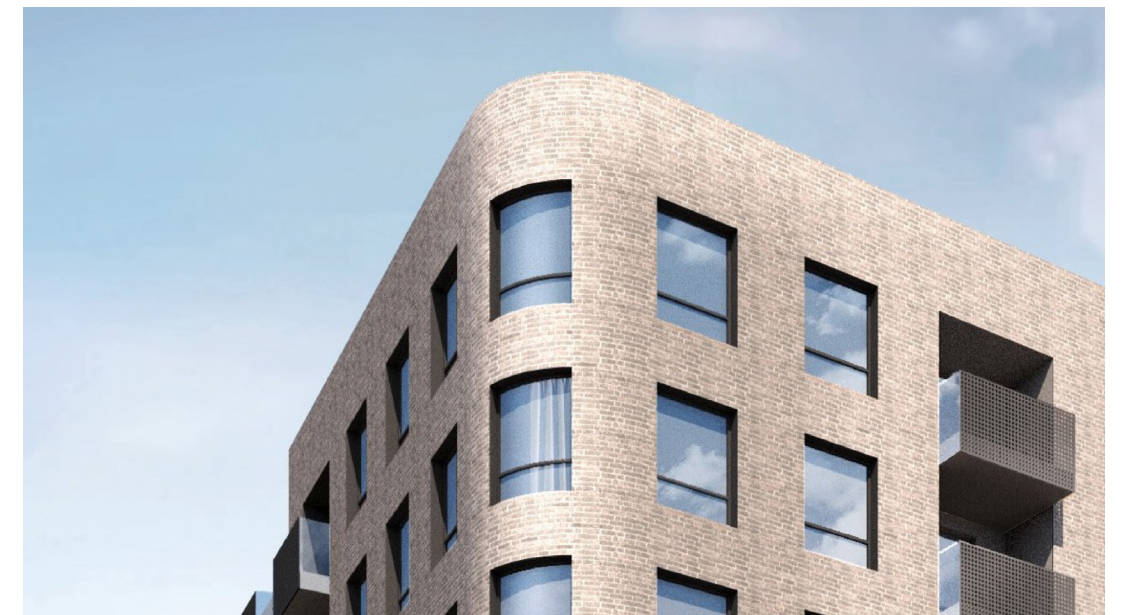
Situated on Kingsway Street, one of the main arteries through East Vancouver



Close proximity to the Joyce-Collingwood SkyTrain Station

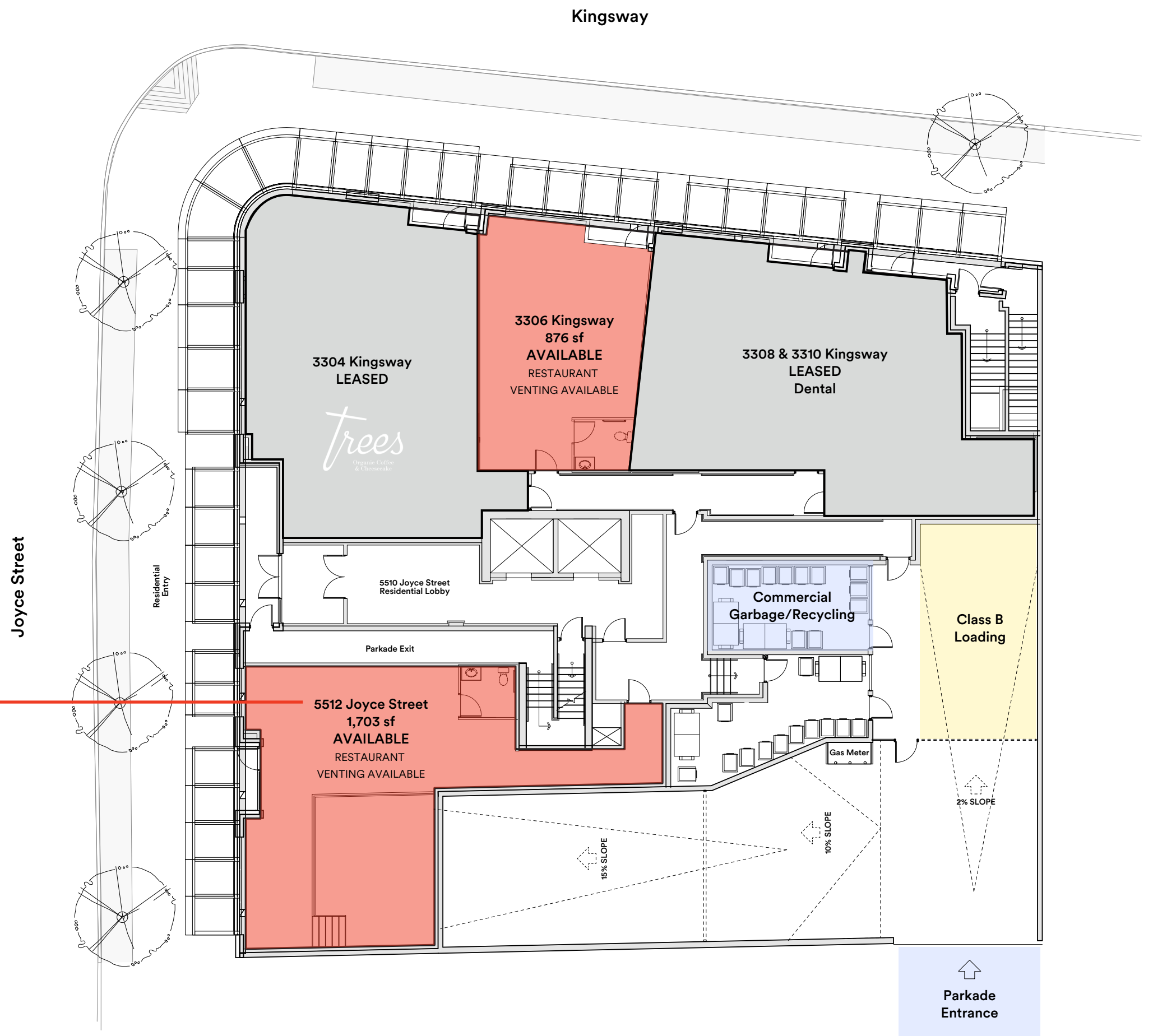
OVERVIEW


Unit Sizes:	876 sf – 1,703 sf
Occupancy:	Immediate
Zoning:	C-2
Parking:	6 Underground Commercial Stalls
Traffic Counts:	Kingsway: 81,087 VPD Joyce St: 52,571 VPD
Asking Rent:	Contact Listing Agents
Additional Rent:	Contact Listing Agents

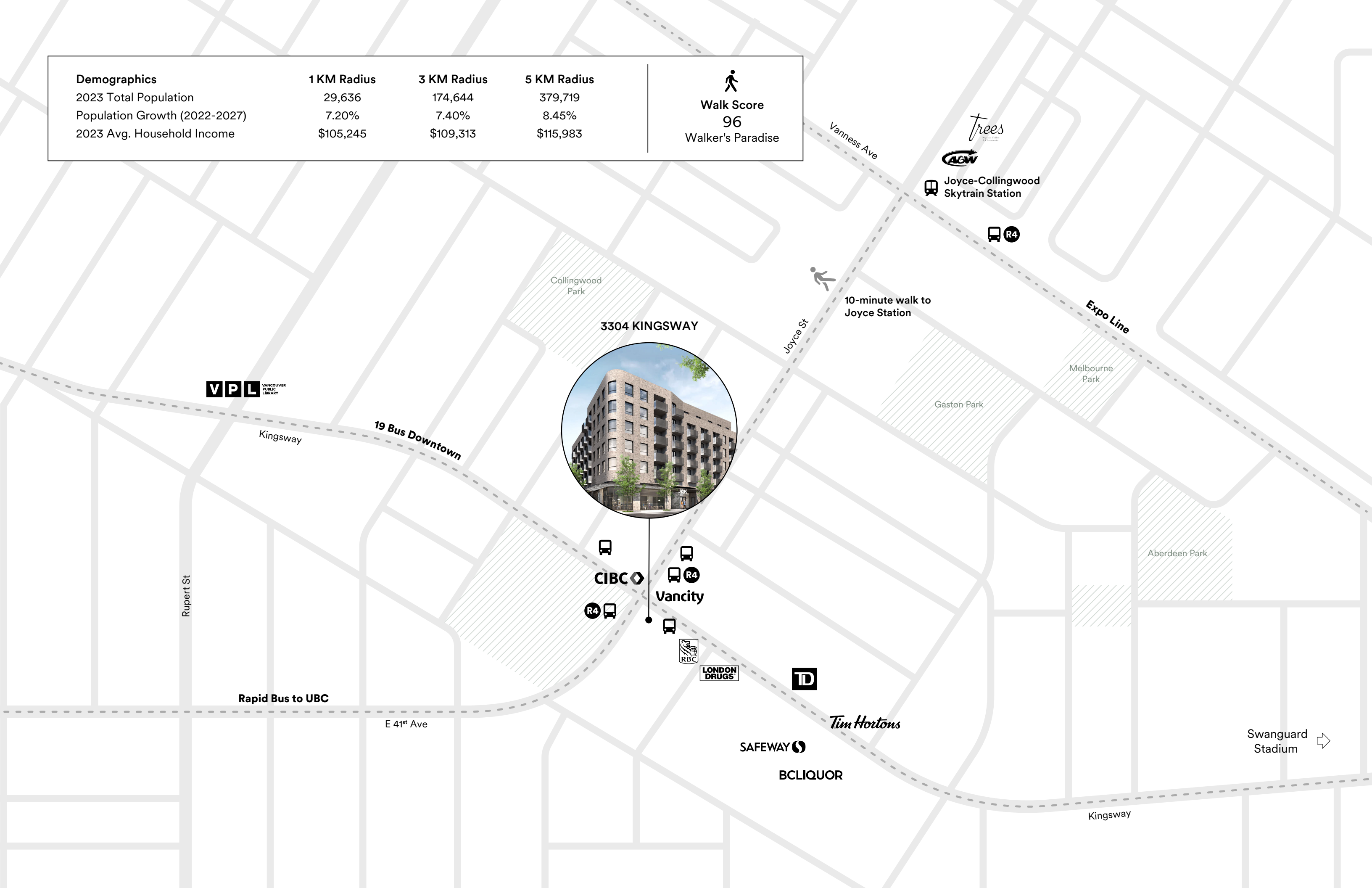


SITE PLAN

Rentable areas quoted are estimates and are inclusive of a gross-up factor.



Demographics	1 KM Radius	3 KM Radius	5 KM Radius	
2023 Total Population	29,636	174,644	379,719	 Walk Score 96 Walker's Paradise
Population Growth (2022-2027)	7.20%	7.40%	8.45%	
2023 Avg. Household Income	\$105,245	\$109,313	\$115,983	



3304 KINGSWAY

VPL VANCOUVER PUBLIC LIBRARY

19 Bus Downtown

Kingsway

Rupert St

Rapid Bus to UBC

E 41st Ave

CIBC

Vancity

R4

RBC

LONDON DRUGS

TD

SAFEWAY

BCLIQUOR

Tim Hortons

Gaston Park

Melbourne Park

Aberdeen Park

Joycel-Collingwood Skytrain Station

R4

10-minute walk to Joycel Station

Expo Line

Swanguard Stadium

Vanness Ave

Trees

AGW

Kingsway

NEIGHBOURHOOD OVERVIEW

3304 Kingsway is located in the bustling and diverse Joyce-Collingwood neighbourhood of East Vancouver, an area known for its thriving commercial activity and high pedestrian traffic. The property is a short distance from the Joyce-Collingwood SkyTrain Station, providing excellent accessibility and convenient connections to downtown Vancouver, Burnaby, and other key areas in the Lower Mainland. The surrounding area is home to a wide array of established businesses, including Safeway grocery store, eclectic markets, cafés and restaurants, all contributing to this prime retail destination. The daily foot traffic and visibility of the site is further enhanced by the busy elementary school directly across the street.



Marcus & Millichap

1100 – 1111 West Georgia Street,
Vancouver, BC V6E 4M3
(604) 638-2121

Jack Allpress

Senior Managing Director, Leasing & Investments
Personal Real Estate Corporation

(604) 638-1975
JAllpress@MarcusMillichap.com

Trevor Shumka

Director

(604) 857-4712
TShumka@MarcusMillichap.com

Hudson.

The information contained in the following Marketing Brochure is proprietary and strictly confidential. It is intended to be reviewed only by the party receiving it from Marcus & Millichap and should not be made available to any other person or entity without the written consent of Marcus & Millichap. This Marketing Brochure has been prepared to provide summary, unverified information to prospective purchasers, and to establish only a preliminary level of interest in the subject property. The information contained herein is not a substitute for a thorough due diligence investigation. Marcus & Millichap has not made any investigation, and makes no warranty or representation, with respect to the income or expenses for the subject property, the future projected financial performance of the property, the size and square footage of the property and improvements, the presence or absence of contaminating substances, PCB's or asbestos, the compliance with State and Federal regulations, the physical condition of the improvements thereon, or the financial condition or business prospects of any tenant, or any tenant's plans or intentions to continue its occupancy of the subject property. The information contained in this Marketing Brochure has been obtained from sources we believe to be reliable; however, Marcus & Millichap has not verified, and will not verify, any of the information contained herein, nor has Marcus & Millichap conducted any investigation regarding these matters and makes no warranty or representation whatsoever regarding the accuracy or completeness of the information provided. All potential buyers must take appropriate measures to verify all of the information set forth herein.

Marcus & Millichap is not affiliated with, sponsored by, or endorsed by any commercial tenant or lessee identified in this marketing package. The presence of any corporation's logo or name is not intended to indicate or imply affiliation with, or sponsorship or endorsement by, said corporation of Marcus & Millichap, its affiliates or subsidiaries, or any agent, product, service, or commercial listing of Marcus & Millichap, and is solely included for the purpose of providing tenant lessee information about this listing to prospective customers.

This information has been secured from sources we believe to be reliable, but we make no representations or warranties, express or implied, as to the accuracy of the information. References to square footage or age are approximate. Buyer must verify the information and bears all risk for any inaccuracies. Marcus & Millichap is a trademark of Marcus & Millichap Real Estate Investment Services, Inc. Used under license by Marcus & Millichap Real Estate Investment Services Canada Inc. © 2026 Marcus & Millichap. All rights reserved.